

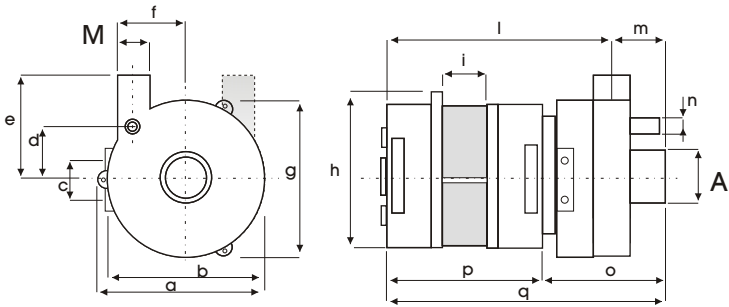


# ZF 171C

kW 0.24 Hm 7.0 max  
Hp 0.32 L/1' 116 max

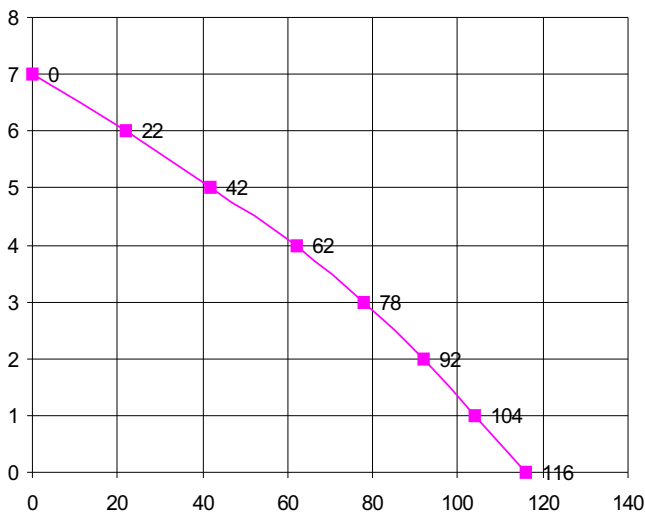


Corpo Pompa Pump Body Pumpengehäuse	<b>PP 30GF</b>
Girante Chiusa Closed Impeller Geschl. Laufrad	<b>PPO 20GF</b> Ø71,5
Albero Motore Motor Shaft Motorwelle	<b>C 40</b>
Tenuta Meccanica Mechanical Seal Gleitringdichtung	<b>GRAFITE/CERAMICA</b> <b>CARBON/CERAMIC</b> <b>KOHLE/KERAMIK</b>



SX	A	M
L2:	25	25

mod	a	b	c	d	e	f	g	h	i	l	m	n	o	p	kg
ZF 171	94	91	25	27	67	32,5	91	135	34						



H m	0	1	2	3	4	5	6	7
L / 1'	116	104	92	78	62	42	22	0

Potenza motore Motor power Motor Leistung	<b>Hp kW</b> <b>0,32 0,24</b>
Tensione/Frequenza Tension/Frequency Spannung/Frequenz	<b>1~V/Hz</b> <b>230/50</b>
Corrente assorbita Power consumption Stromaufnahme	<b>A</b> <b>1,16</b>
GPM RPM UPM	<b>2800</b>
Condensatore Capacitor Kondensator	<b>8 µF</b>
Protezione termica Thermal Overload Überlastschutz	<b>155 °C</b>
Classe isolamento Insulation class Isolationsklasse	<b>F</b>
Grado protezione Protection class Schutzklasse	<b>IP 00</b>
Servizio Duty Betriebsart	<b>S1</b> CONTINUO CONTINUOUS DAUERBETRIEB

REVISIONE N.00.01/03 P57/02

Ci riserviamo il diritto di apportare modifiche tecniche  
We reserve the right of technical modifications  
Technische Änderungen vorbehalten